

## Features

- Noncorrosive
- Easy assembly
- Low weight
- Fully safe



FOR VLT80, VLT100, VLT110, VLT130, VLT150, MVL80, MVL100 & MVL110 SERIES

## Derating Guidelines

VLT80/MVL80: De-rate to 70% of values mentioned in temperature de-rating curves of open frame models at all load and ambient conditions.

VLT100/MVL100: De-rate to 70% of values mentioned in temperature de-rating curves of open frame models at all load and ambient conditions.

VLT110/MVL110: De-rate to 70% of values mentioned in temperature de-rating curves of open frame models at all load and ambient conditions.

VLT130/VLT150: De-rate to 70% of values mentioned in temperature de-rating curves of open frame models at all load and ambient conditions.

## Contents

Mounting Base, Cover, Insulator, Fixing Screws

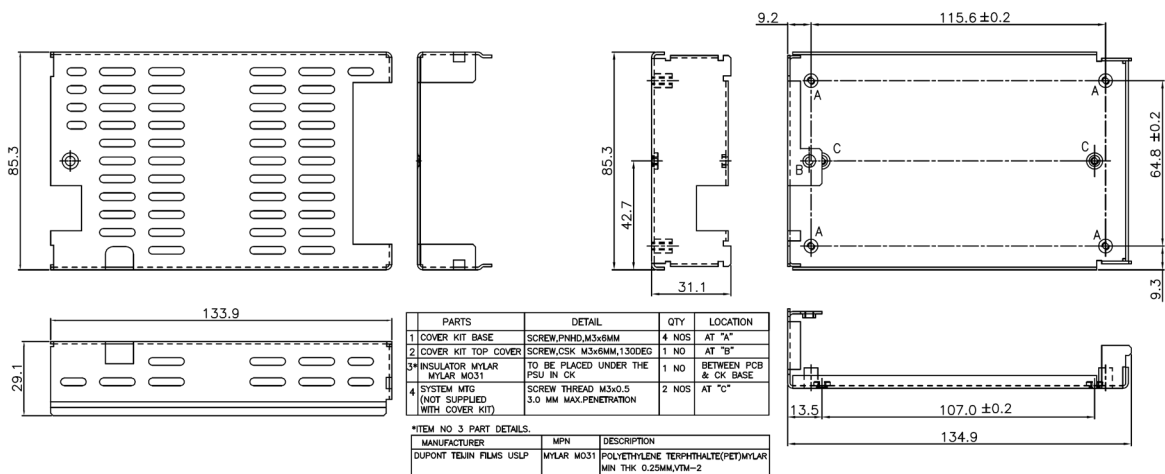
## Mechanical Dimensions

Cover and Base Material EG(Zintec)/CRCA/GI 1.0mm thick (Powder coating/ Passivation/ ED coating black)

Marked A: PCB MTG; B: COVER MTG; C: SYSTEM MTG, M3 Thread

All dimensions are in mm. General tolerance : +/-0.5

## Mechanical Drawing



VLT80-CK.  
MECHANICAL OUTLINE DIMENSIONS.



Innovations in Power